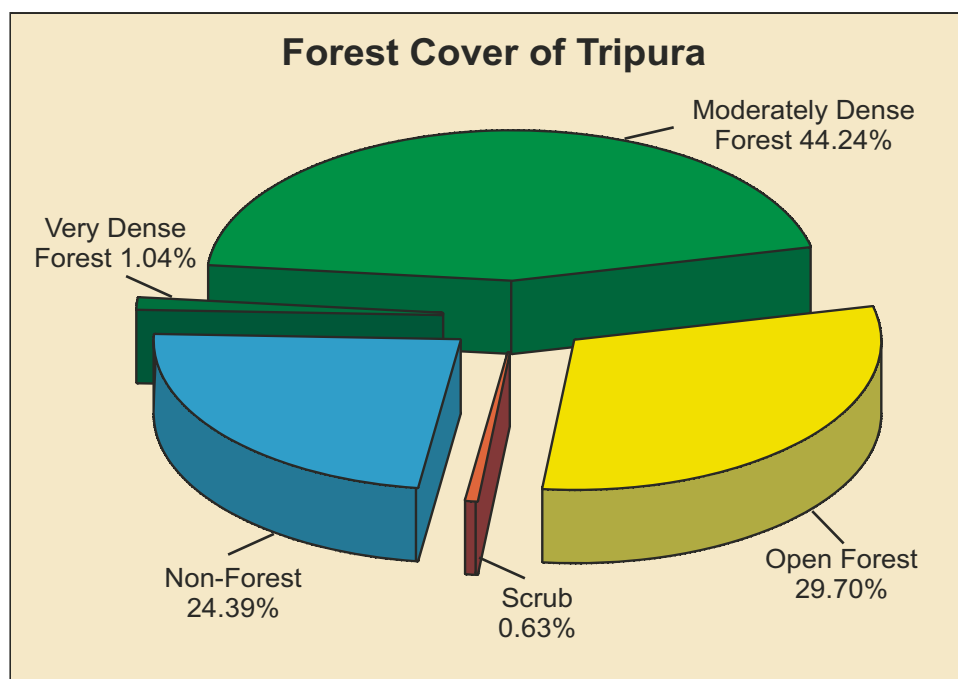


## 9.26 Tripura

<b>Geographical Area</b>	10,491 sq km
<b>Population</b> (as per Census 2011)	3.67 million
Urban	0.96 million (26.17%)
Rural	2.71 million (73.83%)
Tribal	1.17 million (31.76%)
<b>Average Population Density</b>	350 per sq km
Livestock population (as per 18 <sup>th</sup> Livestock Census)	1.87 million
<b>No. of Districts</b> (as per Census 2011)	4
No. of Hill Districts	4
No. of Tribal Districts	4

<b>Forest Cover within Green Wash</b>	
Very Dense Forest	96 sq km
Moderately Dense Forest	4,036 sq km
Open Forest	2,469 sq km
<b>Sub Total</b>	<b>6,601 sq km</b>
<b>Forest Cover outside Green Wash</b>	
Very Dense Forest	13 sq km
Moderately Dense Forest	605 sq km
Open Forest	647 sq km
<b>Sub Total</b>	<b>1,265 sq km</b>
<b>Total Forest Cover</b>	<b>7,866 sq km</b>
<b>Tree Cover</b>	<b>213 sq km</b>
<b>Total Forest &amp; Tree cover</b>	<b>8,079 sq km</b>
Per capita Forest & Tree Cover	0.220 ha
Of State's Geographical Area	77.01%
Of India's Forest & Tree Cover	1.02 %



Growing Stock	
Growing Stock in Recorded Forest Area	22.90 million cum
Growing Stock in TOF	6.87 million cum
Growing Stock in Agroforestry	4.80 million cum
Growing Stock in Urban Area	0.08 million cum

Recorded Forest Area	
Reserved Forest	4,175 sq km
Protected Forest	2 sq km
Unclassed Forest	2,117 sq km
<b>Total</b>	<b>6,294 sq km</b>
Of State's Geographical Area	59.99%
Of India's Forest Area	0.82%

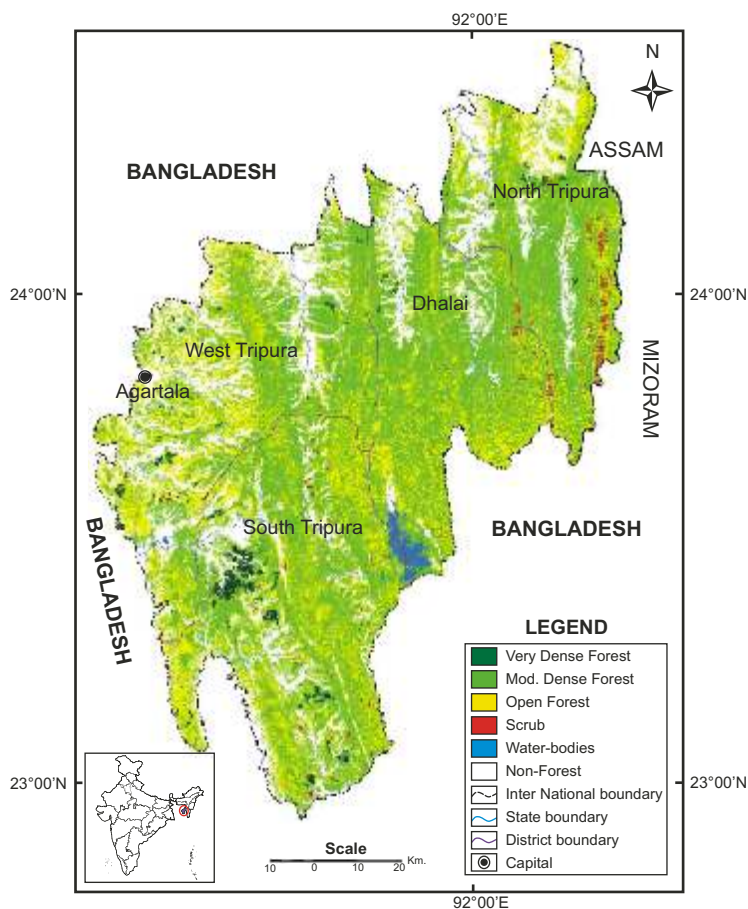


Fig 9.26 Forest Cover Map of Tripura

Table 9.26a: District-wise Forest Cover of Tripura

District-wise Forest Cover						(Area in km <sup>2</sup> )		
District	Geo-graphical Area	2013 Assessment				Percent of GA	Change	Scrub
		Very Dense Forest	Mod. Dense Forest	Open Forest	Total			
Dhalai <sup>TH</sup>	2,402	3	1,255	640	1,898	79.02	-14	37
North Tripura <sup>TH</sup>	2,039	10	933	516	1,459	71.55	-55	11
South Tripura <sup>TH</sup>	3,057	73	1,388	1,013	2,474	80.93	1	15
West Tripura <sup>TH</sup>	2,993	23	1,065	947	2,035	67.99	-43	3
<b>Grand Total</b>	<b>10,491</b>	<b>109</b>	<b>4,641</b>	<b>3,116</b>	<b>7,866</b>	<b>74.98</b>	<b>-111</b>	<b>66</b>

**Table 9.26b: Change Matrix of Tripura**

Forest Cover Change Matrix						(Area in km <sup>2</sup> )
2011 Assessment	2013 Assessment					Total 2011
	VDF	MDF	OF	Scrub	NF	
Very Dense Forest	99	9	0	0	1	<b>109</b>
Moderately Dense Forest	7	4,532	66	2	79	<b>4,686</b>
Open Forest	3	78	3,015	2	84	<b>3,182</b>
Scrub	0	3	12	56	1	<b>72</b>
Non Forest	0	19	23	6	2,394	<b>2,442</b>
<b>Total 2013</b>	<b>109</b>	<b>4,641</b>	<b>3,116</b>	<b>66</b>	<b>2,559</b>	<b>10,491</b>
Net Change	0	-45	-66	-6	117	

**Table 9.26c: Altitude-wise Forest Cover of Tripura**

Altitude-wise Forest Cover					(Area in km <sup>2</sup> )
Altitude Zone	VDF	MDF	OF	Total	
0-500m	109	4,600	3,095	7,804	
500-1000m	0	41	21	62	
<b>Total</b>	<b>109</b>	<b>4,641</b>	<b>3,116</b>	<b>7,866</b>	

(Based on SRTM, Digital Elevation Model)

### Reasons for change detected in 2013 assessment:

The main reason for change in forest cover is shifting cultivation widely practiced across the state of Tripura.