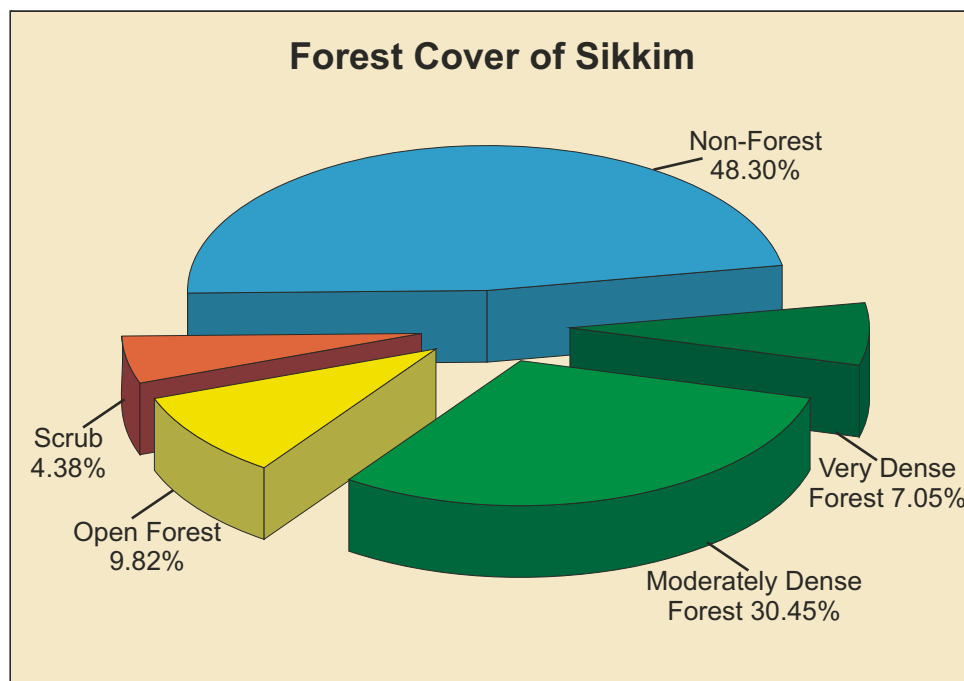


9.24 Sikkim

Geographical Area	7,096 sq km
Population (as per Census 2011)	0.611 million
Urban	0.154 million (25.20 %)
Rural	0.457 million (74.80 %)
Tribal	0.206 million (33.72 %)
Average Population Density	86 per sq km
Livestock population (as per 18 th Live Stock Census)	0.270 million
No. of Districts (as per Census 2001)	4
No. of Hill Districts	4
No. of Tribal Districts	4

Forest Cover within Green Wash	
Very Dense Forest	341 sq km
Moderately Dense Forest	1,385 sq km
Open Forest	295 sq km
Sub Total	2,021 sq km
Forest Cover outside Green Wash	
Very Dense Forest	159 sq km
Moderately Dense Forest	776 sq km
Open Forest	402 sq km
Sub Total	1,337 sq km
Total Forest Cover	3,358 sq km
Tree Cover	31 sq km
Total Forest & Tree Cover	3,389 sq km
Per capita Forest & Tree Cover	0.555 ha
Of State's Geographical Area	47.46%
Of India's Forest & Tree Cover	0.43%



Growing Stock	
Growing Stock in Recorded Forest Area	23.84 million cum
Growing Stock in TOF	2.42 million cum
Growing Stock in Agroforestry	0.79 million cum
Growing Stock in Urban Area	0.002 million cum

Recorded Forest Area	
Reserved Forest	5,452 sq km
Protected Forest	389 sq km
Unclassed Forest	0 sq km
Total	5,841 sq km
Of State's Geographical Area	82.31 %
Of India's Forest Area	0.76 %

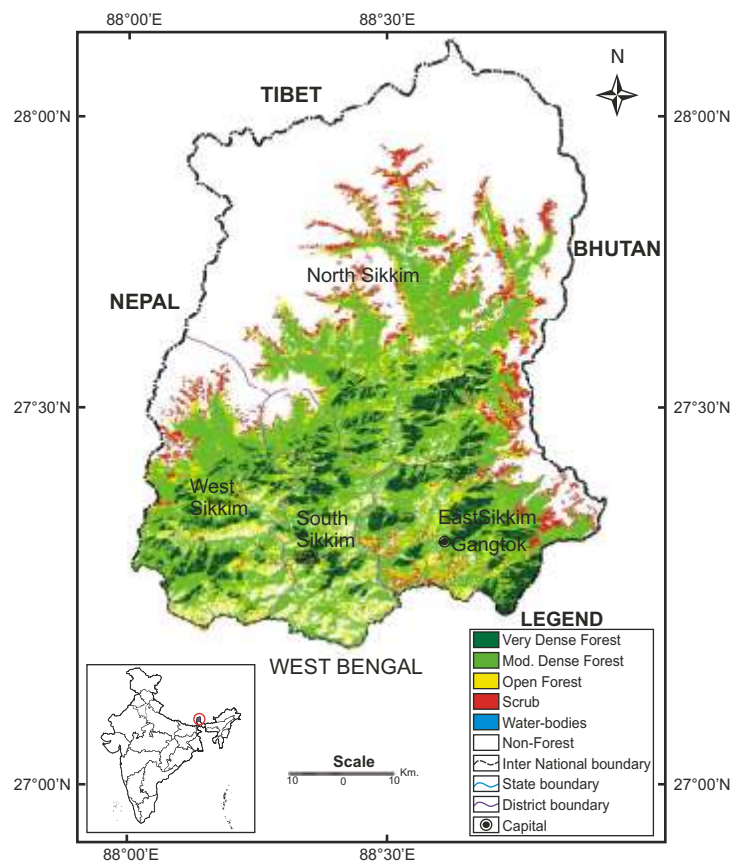


Fig 9.24 Forest Cover Map of Sikkim

Table 9.24a: District-wise Forest Cover of Sikkim

District-wise Forest Cover							(Area in km ²)		
District	Geo-graphical Area	2013 Assessment				Percent of GA	Change	Scrub	
		Very Dense Forest	Mod. Dense Forest	Open Forest	Total				
East Sikkim TH	954	162	411	126	699	73.27	0	67	
North Sikkim TH	4,226	135	890	291	1,316	31.14	-1	198	
South Sikkim TH	750	93	371	107	571	76.13	0	4	
West Sikkim TH	1,166	110	489	173	772	66.21	0	42	
Grand Total	7,096	500	2,161	697	3,358	47.32	-1	311	

Table 9.24b: Change Matrix of Sikkim

Forest Cover Change Matrix						(Area in km ²)
2011 Assessment	2013 Assessment					Total 2011
	VDF	MDF	OF	Scrub	NF	
Very Dense Forest	500	0	0	0	0	500
Moderately Dense Forest	0	2,157	1	0	3	2,161
Open Forest	0	2	695	0	1	698
Scrub	0	0	0	311	52	363
Non Forest	0	2	1	0	3,371	3,374
Total 2013	500	2,161	697	311	3,427	7,096
Net Change	0	0	-1	-52	53	0

Table 9.24c: Altitude-wise Forest Cover of Sikkim

Altitude-wise Forest Cover					(Area in km ²)
Altitude Zone	VDF	MDF	OF	Total	
0-500m	0	26	11	37	
500-1000m	5	160	92	257	
1000-2000m	186	639	266	1,091	
2000-3000m	295	684	107	1,086	
3000-4000m	14	611	151	776	
>4000m	0	41	70	111	
Total	500	2,161	697	3,358	

(Based on SRTM, Digital Elevation Model)

Reasons for change detected in 2013 assessment:

There is a slight decrease in forest cover due to earthquake induced landslides in Sikkim in 2011.