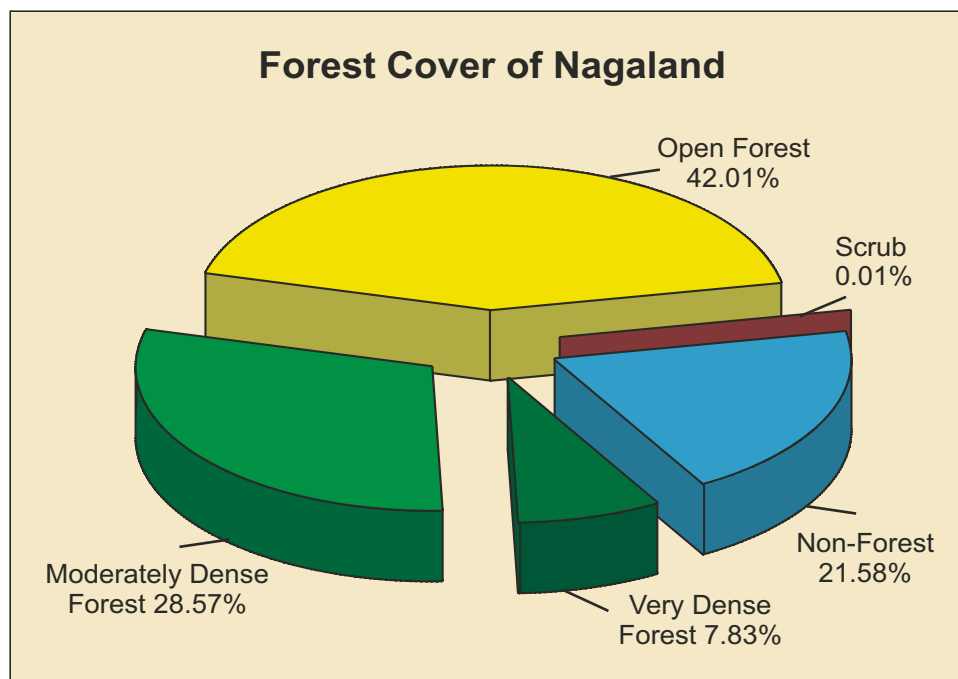


## 9.20 Nagaland

<b>Geographical Area</b>	16,579 sq km
<b>Population</b> (as per Census 2011)	1.98 million
Urban	0.57 million (28.79%)
Rural	1.41 million (71.21%)
Tribal	1.71 million (86.48%)
<b>Average Population Density</b>	119 per sq km
Livestock population (as per 18 <sup>th</sup> Live Stock Census)	1.42 million
<b>No. of Districts</b> (as per Census 2001)	8
No. of Hill Districts	8
No. of Tribal Districts	8

<b>Forest Cover within Green Wash</b>	
Very Dense Forest	1,161 sq km
Moderately Dense Forest	3,337 sq km
Open Forest	4,449 sq km
<b>Sub Total</b>	<b>8,947 sq km</b>
<b>Forest Cover outside Green Wash</b>	
Very Dense Forest	137 sq km
Moderately Dense Forest	1,399 sq km
Open Forest	2,561 sq km
<b>Sub Total</b>	<b>4,097 sq km</b>
<b>Total Forest Cover</b>	<b>13,044 sq km</b>
<b>Tree Cover</b>	<b>372 sq km</b>
<b>Total Forest &amp; Tree Cover</b>	<b>13,416 sq km</b>
Per capita Forest & Tree Cover	0.678ha
Of State's Geographical Area	80.92%
Of India's Forest & Tree Cover	1.70%



Growing Stock	
Growing Stock in Recorded Forest Area	37.08 million cum
Growing Stock in TOF	11.89 million cum
Growing Stock in Agroforestry	8.66 million cum
Growing Stock in Urban Area	0.08 million cum

Recorded Forest Area	
Reserved Forest	86 sq km
Protected Forest	508 sq km
Unclassed Forest	8,628 sq km
<b>Total</b>	<b>9,222 sq km</b>
Of State's Geographical Area	55.62%
Of India's Forest Area	1.19%

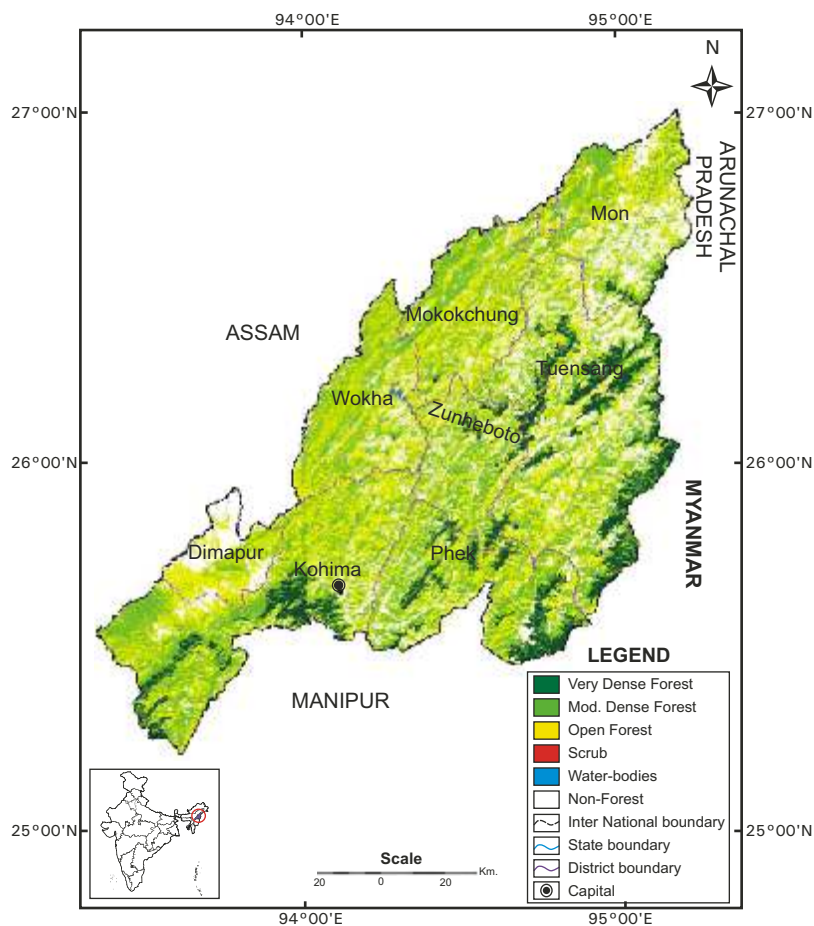


Fig 9.20 Forest Cover Map of Nagaland

Table 9.20a: District-wise Forest Cover of Nagaland

District-wise Forest Cover						(Area in km <sup>2</sup> )		
District	Geo-graphical Area	2013 Assessment				Percent of GA	Change	Scrub
		Very Dense Forest	Mod. Dense Forest	Open Forest	Total			
Dimapur <sup>TH</sup>	758	0	75	352	427	56.33	35	0
Kohima <sup>TH</sup>	3,283	289	1,136	1,472	2,897	88.24	-26	0
Mokokchung <sup>TH</sup>	1,615	6	519	835	1,360	84.21	11	0
Mon <sup>TH</sup>	1,786	32	451	720	1203	67.36	-36	1
Phek <sup>TH</sup>	2,026	276	652	764	1,692	83.51	-75	0
Tuensang <sup>TH</sup>	4,228	609	1,027	1,490	3,126	73.94	-106	1
Wokha <sup>TH</sup>	1,628	1	491	862	1,354	83.17	-24	0
Zunheboto <sup>TH</sup>	1,255	85	385	515	985	78.49	-53	0
<b>Grand Total</b>	<b>16,579</b>	<b>1,298</b>	<b>4,736</b>	<b>7,010</b>	<b>13,044</b>	<b>78.68</b>	<b>-274</b>	<b>2</b>

**Table 9.20b: Change Matrix of Nagaland**

Forest Cover Change Matrix						(Area in km <sup>2</sup> )
2011 Assessment	2013 Assessment					Total 2011
	VDF	MDF	OF	Scrub	NF	
Very Dense Forest	1,284	6	3	0	0	<b>1,293</b>
Moderately Dense Forest	14	4,730	17	0	170	<b>4,931</b>
Open Forest	0	0	6,939	0	155	<b>7,094</b>
Scrub	0	0	0	2	1	<b>3</b>
Non Forest	0	0	51	0	3,207	<b>3,258</b>
<b>Total 2013</b>	<b>1,298</b>	<b>4,736</b>	<b>7,010</b>	<b>2</b>	<b>3,533</b>	<b>16,579</b>
Net Change	5	-195	-84	-1	275	

**Table 9.20c: Altitude-wise Forest Cover of Nagaland**

Altitude-wise Forest Cover					(Area in km <sup>2</sup> )
Altitude Zone	VDF	MDF	OF	Total	
0-500m	0	1,089	1,984	3,073	
500-1000m	16	1,352	2,462	3,830	
1000-2000m	587	2,047	2,462	5,096	
2000-3000m	682	240	100	1,022	
Above 3000m	13	8	2	23	
<b>Total</b>	<b>1,298</b>	<b>4,736</b>	<b>7,010</b>	<b>13,044</b>	

(Based on SRTM, Digital Elevation Model)

### Reasons for change detected in 2013 assessment:

The main reason for decrease in forest cover is biotic pressure, particularly the shortening of shifting cultivation cycle.