

**7.19**  
**MIZORAM**

<b>Geographical Area</b>	21,081 sq km
<b>Population (as per Census 2011)</b>	1.09 million
Urban	0.57 million (52.11%)
Rural	0.52 million (47.89%)
Tribal	1.03 million (94.43 %)
<b>Average Population Density</b>	52 per sq km
<b>Livestock population</b> (as per 18th Live Stock Census)	0.33 million
<b>No. of Districts</b> (as per Census 2001)	8
<b>No. of Hill Districts</b>	8
<b>No. of Tribal Districts</b>	8

#### Land Use Pattern

Land Use	Area in '000 ha	Percentage
Total Geographical Area	2,108	
Reporting area for land utilization	2,094	100
Forests	1,585	75.71
Not available for cultivation	95	4.54
Permanent pastures and other grazing lands	5	0.25
Land under Misc. Tree crops and groves	41	1.96
Culturable wasteland	7	0.32
Fallow lands other than current fallows	194	9.27
Current fallows	50	2.41
Net area sown	116	5.54

Source: Landuse Statistics, Ministry of Agriculture, GOI 2012-13.

### Forest Cover Within Green Wash

Very Dense Forest	136 sq km
Moderately Dense Forest	5,700 sq km
Open Forest	12,517 sq km
<b>Sub Total</b>	<b>183,53 sq km</b>

### Forest Cover Outside Green Wash

Very Dense Forest	2 sq km
Moderately Dense Forest	158 sq km
Open Forest	235 sq km
<b>Sub Total</b>	<b>395 sq km</b>

<b>Total Forest Cover</b>	<b>18,748 sq km</b>
<b>Tree Cover</b>	<b>535 sq km</b>
<b>Total Forest &amp; Tree Cover</b>	<b>19,283 sq km</b>
Per capita Forest & Tree Cover	1.769 ha
Of State's Geographical Area	91.47 %
Of India's Forest & Tree Cover	2.43 %

### Forest Cover Informatics in Different Patch Size Class

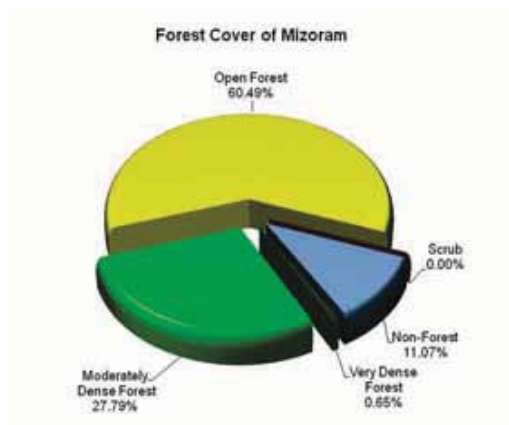
S.No.	Patch Size Range in (sq km)	No. of Patches	Area (sq km)	%age
1.	<= 0.01 <=1.0	1,611	71	0.38
2.	> 1.0 <= 10	11	19	0.10
3.	> 10 <= 100	0	0	0.0
4.	> 100 <= 500	0	0	0.0
5.	> 500 <= 1000	0	0	0.0
6.	> 1000 <= 5000	0	0	0.0
7.	> 5000 <= 10000	0	0	0.0
8.	> 10000	1	18,658	99.52
	<b>Total</b>	<b>1,623</b>	<b>18,748</b>	<b>100</b>

### Forest Types

(Area in km<sup>2</sup>)

Forest Type	Area	Percent
2B/2S1 Pioneer <i>Euphorbiaceous</i> Scrub	280.75	1.50
2B/C2 Cachar Tropical Semi-Evergreen Forest	4,675.93	25.03
2/2S1 Secondary Moist Bamboo Brakes	8,484.05	45.41
3C/C3b East Himalayan Moist Mixed Deciduous Forest	5,120.17	27.40
8B/C1 East Himalayan Subtropical Wet Hill Forest	6.82	0.04
9/C2 Assam Subtropical Pine Forest	116.28	0.62
<b>Total</b>	<b>18,684.00</b>	<b>100</b>

Source: Atlas Forest Types of India, 2011

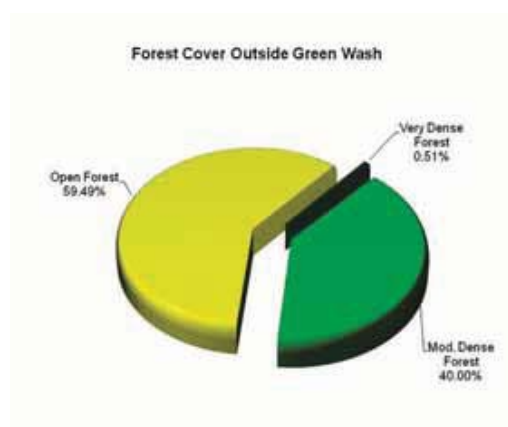
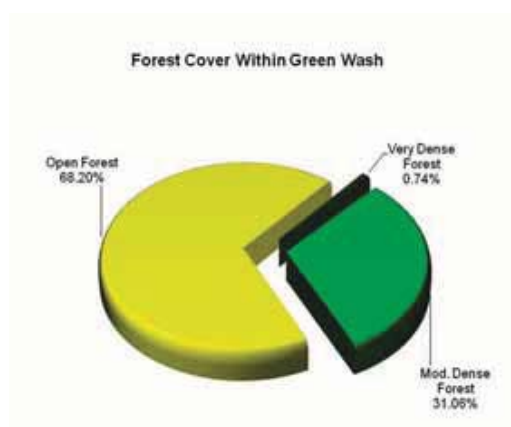


### Growing Stock

Growing Stock in Recorded Forest Area	60.59 million cum
Growing Stock in TOF	8.91 million cum

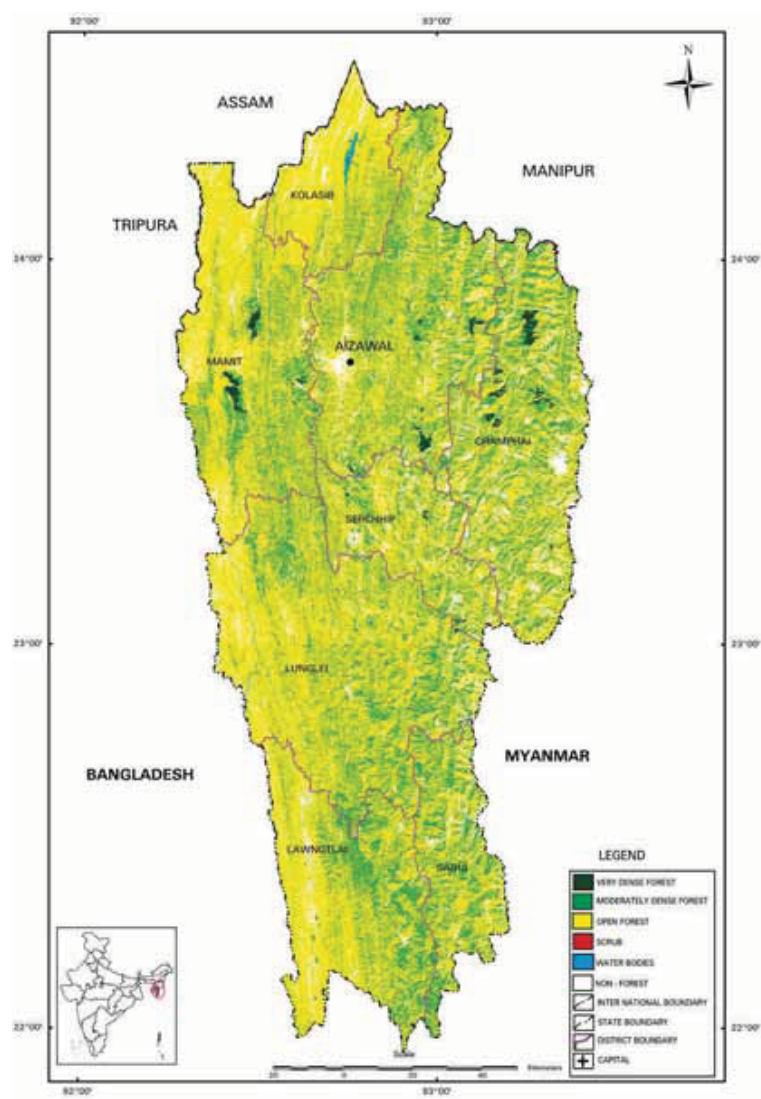
### Recorded Forest Area

Reserved Forest	4,483 sq km
Protected Forest	0 sq km
Unclassed Forest	1,158 sq km
<b>Total</b>	<b>5,641 sq km</b>
Of State's Geographical Area	26.76%
Of India's Forest Area	0.74 %



**Table 7.19a :** District-wise Forest Cover of Mizoram

District-wise Forest Cover <span style="float: right;">(Area in km<sup>2</sup>)</span>								
District	Geo-graphical Area	Very Dense Forest	Mod. Dense Forest	Open Forest	Total	Percent of GA	Change	Scrub
Aizwal <sup>TH</sup>	3,575	28	1,135	2,022	3,185	89.09	-64	0
Champhai <sup>TH</sup>	3,185	60	1,042	1,570	2,673	83.92	-93	0
Kolasib <sup>TH</sup>	1,382	0	187	1,027	1,214	87.84	-15	0
Lawngtlai <sup>TH</sup>	2,557	0	705	1,632	2,337	91.40	-13	0
Lunglei <sup>TH</sup>	4,536	1	1,186	2,954	4,141	91.29	-55	0
Mamit <sup>TH</sup>	3,025	43	654	2,044	2,741	90.61	-35	0
Sahia <sup>TH</sup>	1,400	0	551	696	1,247	89.07	-18	0
Serchhip <sup>TH</sup>	1,421	6	398	807	1,211	85.22	-13	0
<b>Grand Total</b>	<b>21,081</b>	<b>138</b>	<b>5,858</b>	<b>12,752</b>	<b>18,748</b>	<b>88.93</b>	<b>-306</b>	<b>0</b>



**Figure 7.19:** Forest Cover Map of Mizoram

**Table 7.19b :** Change Matrix of Mizoram

<b>Forest Cover Change Matrix</b> (Area in km <sup>2</sup> )						
Class	2015 Assessment					Total ISFR 2013
	VDF	MDF	OF	Scrub	NF	
Very Dense Forest	138	0	0	0	0	138
Moderately Dense Forest	0	5,858	4	0	38	5,900
Open Forest	0	0	12,744	0	272	13,016
Scrub	0	0	0	0	0	0
Non Forest	0	0	4	0	2,023	2,027
<b>Total ISFR 2015</b>	<b>138</b>	<b>5,858</b>	<b>12,752</b>	<b>0</b>	<b>2,333</b>	<b>21,081</b>
Net Change	0	-42	-264	0	306	

**Table 7.19c :** Altitude-wise Forest Cover of Mizoram

<b>Altitude-wise Forest Cover</b> (Area in km <sup>2</sup> )				
Altitude Zone	VDF	MDF	OF	Total
0-500m	1	1,713	6,499	8,213
500-1000m	37	2,718	4,588	7,343
1000-2000m	99	1,426	1,665	3,190
2000-3000m	1	1	0	2
<b>Total</b>	<b>138</b>	<b>5,858</b>	<b>12,752</b>	<b>18,748</b>

(Based on SRTM, Digital Elevation Model)

### Reasons for change detected in 2015 assessment:

The main reasons for decrease in forest cover are shifting cultivation and other biotic pressure on forest lands.