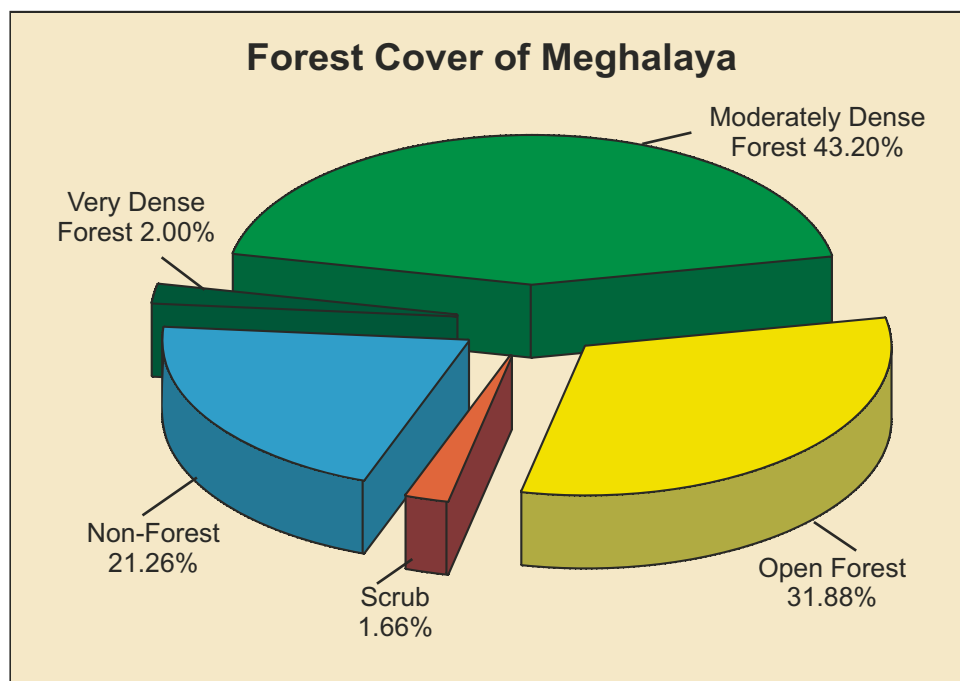


9.18 Meghalaya

Geographical Area	22,429 sq km
Population (as per Census 2011)	2.96 million
Urban	0.59 million (20.07%)
Rural	2.37 million (79.93%)
Tribal	2.56 million (86.15%)
Average Population Density	132 per sq km
Livestock population (as per 18 th Live Stock Census)	1.82 million
No. of Districts (as per Census 2001)	7
No. of Hill Districts	7
No. of Tribal Districts	7

Forest Cover within Green Wash	
Very Dense Forest	416 sq km
Moderately Dense Forest	7,992 sq km
Open Forest	6,473 sq km
Sub Total	14,881 sq km
Forest Cover outside Green Wash	
Very Dense Forest	33 sq km
Moderately Dense Forest	1,697 sq km
Open Forest	677 sq km
Sub Total	2,407 sq km
Total Forest Cover	17,288 sq km
Tree Cover	668 sq km
Total Forest & Tree Cover	17,956 sq km
Per capita Forest & Tree Cover	0.605 ha
Of State's Geographical Area	80.05%
Of India's Forest & Tree Cover	2.27%



Growing Stock	
Growing Stock in Recorded Forest Area	39.88 million cum
Growing Stock in TOF	20.05 million cum
Growing Stock in Agroforestry	15.66 million cum
Growing Stock in Urban Area	0.13 million cum

Recorded Forest Area	
Reserved Forest	1,113 sq km
Protected Forest	12 sq km
Unclassed Forest	8,371 sq km
Total	9,496 sq km
Of State's Geographical Area	42.34%
Of India's Forest Area	1.23%

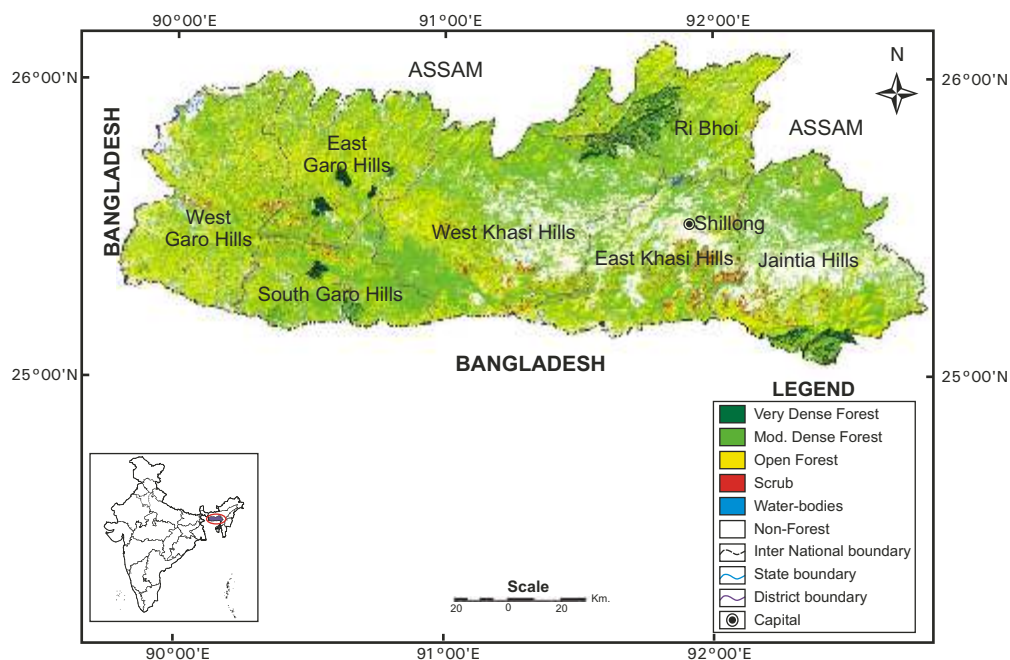


Fig 9.18 Forest Cover Map of Meghalaya

Table 9.18a: District-wise Forest Cover of Meghalaya

District-wise Forest Cover (Area in km ²)								
District	Geo-graphical Area	2013 Assessment				Percent of GA	Change	Scrub
		Very Dense Forest	Mod. Dense Forest	Open Forest	Total			
East Garo Hills TH	2,603	61	1,087	1,093	2,241	86.09	24	39
East Khasi Hills TH	2,820	0	1,079	737	1,816	64.40	16	103
Jaintia TH	3,819	100	1,561	885	2,546	66.67	30	58
Ribhoi TH	2,376	162	1,144	790	2,096	88.22	-25	20
South Garo Hills TH	1,849	43	1,001	604	1,648	89.13	9	22
West Garo Hills TH	3,715	0	1,292	1,654	2,946	79.30	-28	66
West Khasi Hills TH	5,247	83	2,525	1,387	3,995	76.14	-13	64
Grand Total	22,429	449	9,689	7,150	17,288	77.08	13	372

Table 9.18b: Change Matrix of Meghalaya

Forest Cover Change Matrix						(Area in km ²)
2011 Assessment	2013 Assessment					Total 2011
	VDF	MDF	OF	Scrub	NF	
Very Dense Forest	433	0	0	0	0	433
Moderately Dense Forest	16	9,585	0	0	174	9,775
Open Forest	0	17	6,806	15	229	7,067
Scrub	0	0	252	208	25	485
Non Forest	0	87	92	149	4,341	4,669
Total 2013	449	9,689	7,150	372	4,769	22,429
Net Change	16	-86	83	-113	100	

Table 9.18c: Altitude-wise Forest Cover of Meghalaya

Altitude-wise Forest Cover					(Area in km ²)
Altitude Zone	VDF	MDF	OF	Total	
0-500m	248	4,282	4,073	8,603	
500-1000m	193	2,824	2,211	5,228	
1000-2000m	8	2,583	866	3,457	
Total	449	9,689	7,150	17,288	

(Based on SRTM, Digital Elevation Model)

Reasons for change detected in 2013 assessment:

The increase in forest cover of the state is due to better protection measures leading to increase regeneration and also afforestation activities carried out by the State Forest Department. The decrease in forest cover in some of districts has also been observed due to shifting cultivation practices and biotic pressure.