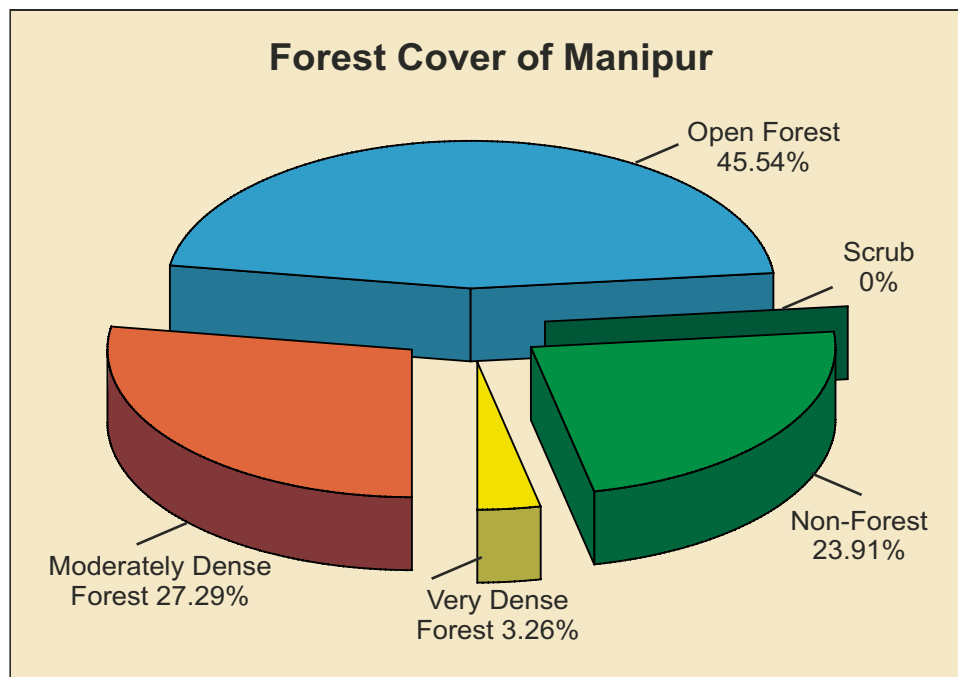


## 9.17 Manipur

<b>Geographical Area</b>	22,327 sq km
<b>Population</b> (as per Census 2011)	2.57 million
Urban	0.83 million (32.45%)
Rural	1.74 million (67.55%)
Tribal	0.90 million (35.12%)
<b>Average Population Density</b>	115 per sq km
Livestock population (as per 18 <sup>th</sup> Live Stock Census)	0.79 million
<b>No. of Districts</b> (as per Census 2001)	9
No. of Hill Districts	9
No. of Tribal Districts	9

<b>Forest Cover within Green Wash</b>	
Very Dense Forest	725 sq km
Moderately Dense Forest	5,583 sq km
Open Forest	8,794 sq km
<b>Sub Total</b>	<b>15,102 sq km</b>
<b>Forest Cover outside Green Wash</b>	
Very Dense Forest	3 sq km
Moderately Dense Forest	511 sq km
Open Forest	1,374 sq km
<b>Sub Total</b>	<b>1,888 sq km</b>
<b>Total Forest Cover</b>	<b>16,990 sq km</b>
<b>Tree Cover</b>	<b>224 sq km</b>
<b>Total Forest &amp; Tree Cover</b>	<b>17,214 sq km</b>
Per Capita Forest & Tree Cover	0.669 ha
Of State's Geographical Area	77.09 %
Of India's Forest & Tree Cover	2.18 %



Growing Stock	
Growing Stock in Recorded Forest Area	50.29 million cum
Growing Stock in TOF	9.37 million cum
Growing Stock in Agroforestry	5.05 million cum
Growing Stock in Urban Area	0.08 million cum

Recorded Forest Area	
Reserved Forest	1,467 sq km
Protected Forest	4,171 sq km
Unclassed Forest	11,780 sq km
<b>Total</b>	<b>17,418 sq km</b>
Of State's Geographical Area	78.01 %
Of India's Forest Area	2.26 %

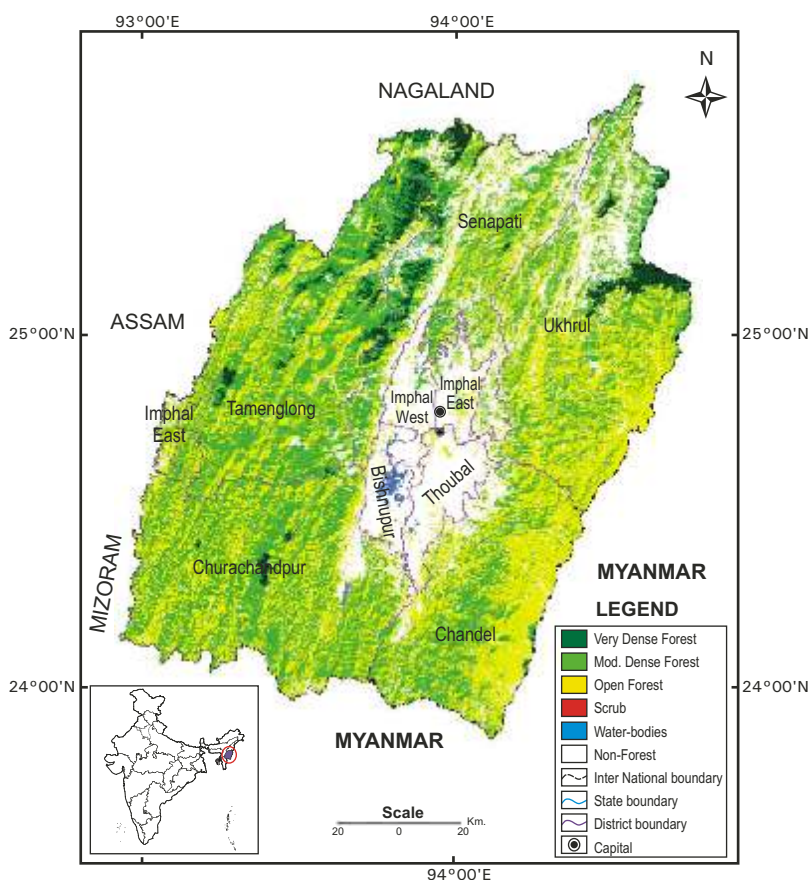


Fig 9.17 Forest Cover Map of Manipur

Table 9.17a: District-wise Forest Cover of Manipur

District-wise Forest Cover (Area in km <sup>2</sup> )								
District	Geo-graphical Area	2013 Assessment				Percent of GA	Change	Scrub
		Very Dense Forest	Mod. Dense Forest	Open Forest	Total			
Bishnupur <sup>TH</sup>	496	0	1	20	21	4.23	0	0
Chandel <sup>TH</sup>	3,313	0	734	2,055	2,789	84.18	-40	0
Churachandpur <sup>TH</sup>	4,570	36	1,671	2,579	4,286	93.79	11	0
Imphal East <sup>TH</sup>	669	0	53	167	220	32.88	0	0
Imphal West <sup>TH</sup>	559	0	24	31	55	9.84	0	0
Senapati <sup>TH</sup>	3,271	232	861	1,080	2,173	66.43	-10	0
Tamenglong <sup>TH</sup>	4,391	279	1,766	1,820	3,865	88.02	-37	0
Thoubal <sup>TH</sup>	514	0	4	51	55	10.70	-1	0
Ukhrul <sup>TH</sup>	4,544	181	980	2,365	3,526	77.60	-23	1
<b>Grand Total</b>	<b>22,327</b>	<b>728</b>	<b>6,094</b>	<b>10,168</b>	<b>16,990</b>	<b>76.10</b>	<b>-100</b>	<b>1</b>

**Table 9.17b: Change Matrix of Manipur**

Forest Cover Change Matrix						(Area in km <sup>2</sup> )
2011 Assessment	2013 Assessment					Total 2011
	VDF	MDF	OF	Scrub	NF	
Very Dense Forest	726	2	0	0	2	<b>730</b>
Moderately Dense Forest	2	6,083	0	0	66	<b>6,151</b>
Open Forest	0	0	9,956	0	253	<b>10,209</b>
Scrub	0	0	0	1	0	<b>1</b>
Non Forest	0	9	212	0	5,015	<b>5,236</b>
<b>Total 2013</b>	<b>728</b>	<b>6,094</b>	<b>10,168</b>	<b>1</b>	<b>5,336</b>	<b>22,327</b>
Net Change	-2	-57	-41	0	100	

**Table 9.17c: Altitude-wise Forest Cover of Manipur**

Altitude-wise Forest Cover				(Area in km <sup>2</sup> )
Altitude Zone	VDF	MDF	OF	Total
Altitude Zone	VDF	MDF	OF	Total
0-500m	7	796	2,286	3,089
500-1000m	18	1,909	4,043	5,970
1000-2000m	390	3,213	3,753	7,356
2000-3000m	313	176	86	575
<b>Total</b>	<b>728</b>	<b>6,094</b>	<b>10,168</b>	<b>16,990</b>

(Based on SRTM, Digital Elevation Model)

### Reasons for change detected in 2013 assessment:

The decrease in forest cover of the state is due to shifting cultivation practices and biotic pressure in major parts of the state.