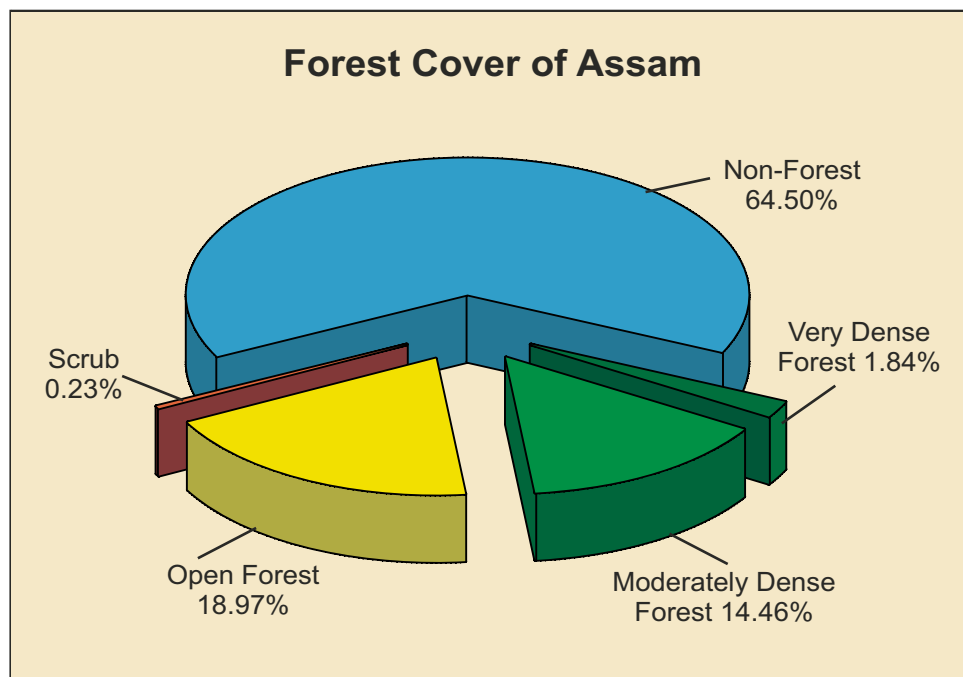


9.3 Assam

Geographical Area	78,438 sq km
Population (as per Census 2011)	31.21 million
Urban	4.40 million (14.10%)
Rural	26.81 million (85.90%)
Tribal	3.88 million (12.45%)
Average Population Density	398 per sq km
Livestock population (as per 18 th Live Stock Census)	17.23 million
No. of Districts (as per Census 2001)	23
No. of Hill Districts	03
No. of Tribal Districts	16

Forest Cover within Green Wash	
Very Dense Forest	1,343 sq km
Moderately Dense Forest	9,724 sq km
Open Forest	8,771 sq km
Sub Total	19,838 sq km*
Forest Cover outside Green Wash	
Very Dense Forest	101 sq km
Moderately Dense Forest	1,621 sq km
Open Forest	6,111 sq km
Sub Total	7,833 sq km
Total Forest Cover	27,671 sq km
Tree cover	1,582 sq km
Total Forest & Tree Cover	29,253 sq km
Per capita Forest & Tree Cover	0.094 ha
Of State's Geographical Area	37.29 %
Of India's Forest & Tree Cover	3.70 %

*Three toposheets of 1:250,000 scale were not available and corresponding greenwash area could not be digitized.



Growing Stock	
Growing Stock in Recorded Forest Area	151.90 million cum
Growing Stock in TOF	38.09 million cum
Growing Stock in Agroforestry	31.81 million cum
Growing Stock in Urban Area	1.16 million cum

Recorded Forest Area	
Reserved Forest	17,864 sq km
Protected Forest	0 sq km
Unclassed Forest	8,968 sq km
Total	26,832 sq km
Of State's Geographical Area	34.21%
Of India's Forest Area	3.48%

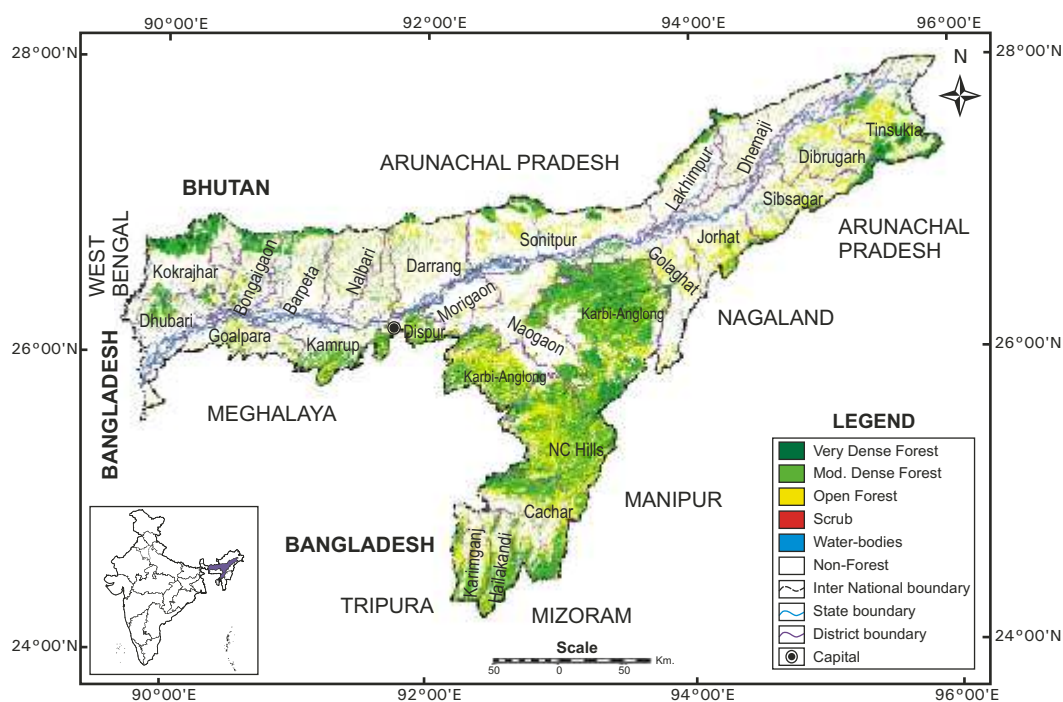


Fig 9.3 Forest Cover Map of Assam

Table 9.3a: District-wise Forest Cover of Assam

District-wise Forest Cover (Area in km ²)								
District	Geo-graphical Area	2013 Assessment				Percent of GA	Change	Scrub
		Very Dense Forest	Mod. Dense Forest	Open Forest	Total			
Barpeta ^T	3,245	35	177	183	395	12.17	-2	2
Bongaigaon	2,510	33	267	221	521	20.76	0	3
Cachar ^T	3,786	81	974	1,186	2,241	59.19	5	18
Darrang ^T	3,481	12	91	365	468	13.44	-2	2
Dhemaji ^T	3,237	7	124	161	292	9.02	1	10
Dhubari ^T	2,798	21	197	194	412	14.72	-6	10
Dibrugarh ^T	3,381	29	165	561	755	22.33	-3	0
Goalpara ^T	1,824	1	71	265	337	18.48	0	8
Golaghat	3,502	6	122	397	525	14.99	0	0
Hailakandi	1,327	13	373	403	789	59.46	3	5
Jorhat ^T	2,851	2	112	495	609	21.36	-4	0
Kamrup ^T	4,345	68	608	753	1,429	32.89	-4	26
Karbi-Anglong ^H	10,434	566	3,801	3,593	7,960	76.29	21	24
Karimganj	1,809	3	317	544	864	47.76	4	48
Kokrajhar ^T	3,169	208	701	211	1,120	35.34	-24	2
Lakhimpur ^T	2,277	4	118	171	293	12.87	0	6
Morigaon ^T	1,704	6	41	86	133	7.81	0	4
North Cachar Hills ^H	4,888	135	1,543	2,592	4,270	87.36	20	1

District	Geo-graphical Area	2013 Assessment				Percent of GA	Change	Scrub
		Very Dense Forest	Mod. Dense Forest	Open Forest	Total			
Naogaon ^H	3,831	40	352	402	794	20.73	-2	8
Nalbari ^T	2,257	4	70	208	282	12.49	0	0
Sibsagar ^T	2,668	8	144	540	692	25.94	-3	1
Sonitpur ^T	5,324	56	279	621	956	17.96	-4	0
Tinsukia ^T	3,790	106	698	730	1,534	40.47	-2	4
Grand Total	78,438	1,444	11,345	14,882	27,671	35.28	-2	182

Table 9.3b: Change Matrix of Assam

Forest Cover Change Matrix (Area in km ²)						
2011 Assessment	2013 Assessment					Total 2011
	VDF	MDF	OF	Scrub	NF	
Very Dense Forest	1,441	3	0	0	0	1,444
Moderately Dense Forest	3	11,328	0	0	73	11,404
Open Forest	0	0	14,665	0	160	14,825
Scrub	0	0	0	182	0	182
Non Forest	0	14	217	0	50,352	50,583
Total 2013	1,444	11,345	14,882	182	50,585	78,438
Net Change	0	-59	57	0	2	

Table 9.3c: Altitude-wise Forest Cover of Assam

Altitude-wise Forest Cover (Area in km ²)				
Altitude Zone	VDF	MDF	OF	Total
0-500m	1,034	8,913	12,347	22,294
500-1000m	326	2,090	2,230	4,646
1000-2000m	84	342	305	731
Total	1,444	11,345	14,882	27,671

(Based on SRTM, Digital Elevation Model)

Reasons for change detected in 2013 assessment:

The decrease in forest cover of the state is due to encroachment in forest land, biotic pressure and shifting cultivation.