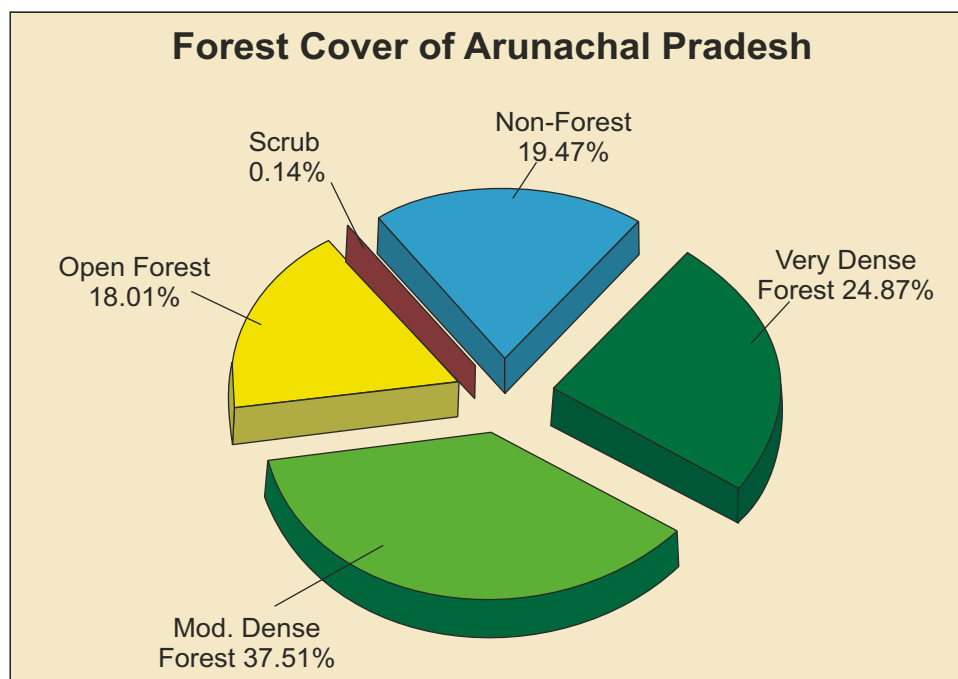


9.2 Arunachal Pradesh

Geographical Area	83,743 sq km
Population (as per Census 2011)	1.38 million
Urban	0.32 million (22.94%)
Rural	1.06 million (77.06%)
Tribal	0.95 million (68.79%)
Average Population Density	17 per sq km
Livestock population (as per 18 th Live Stock Census)	1.41 million
No. of Districts (as per Census 2001)	13
No. of Hill Districts	13
No. of Tribal Districts	13

Forest Cover within Green Wash	
Very Dense Forest	13,182 sq km
Moderately Dense Forest	20,674 sq km
Open Forest	9,698 sq km
Sub Total	43,554 sq km*
Forest Cover outside Green Wash	
Very Dense Forest	7,646 sq km
Moderately Dense Forest	10,740 sq km
Open Forest	5,381 sq km
Sub Total	23,767 sq km
Total Forest Cover	67,321 sq km
Tree Cover	660 sq km
Total Forest & Tree Cover	67,981 sq km
Per capita Forest & Tree Cover	4.913 ha
Of State's Geographical Area	81.18%
Of India's Forest & Tree Cover	8.61%

*Five toposheets of 1:250,000 scale were not available and corresponding greenwash area could not be digitized.



Growing Stock	
Growing Stock in Recorded Forest Area	439.51 million cum
Growing Stock in TOF	87.94 million cum
Growing Stock in Agroforestry	16.66 million cum
Growing Stock in Urban Area	0.37 million cum

Recorded Forest Area	
Reserved Forest	10,723 sq km
Protected Forest	9,779 sq km
Unclassed Forest	31,039 sq km
Total	51,541 sq km
Of State's Geographical Area	61.55%
Of India's Forest Area	6.68%

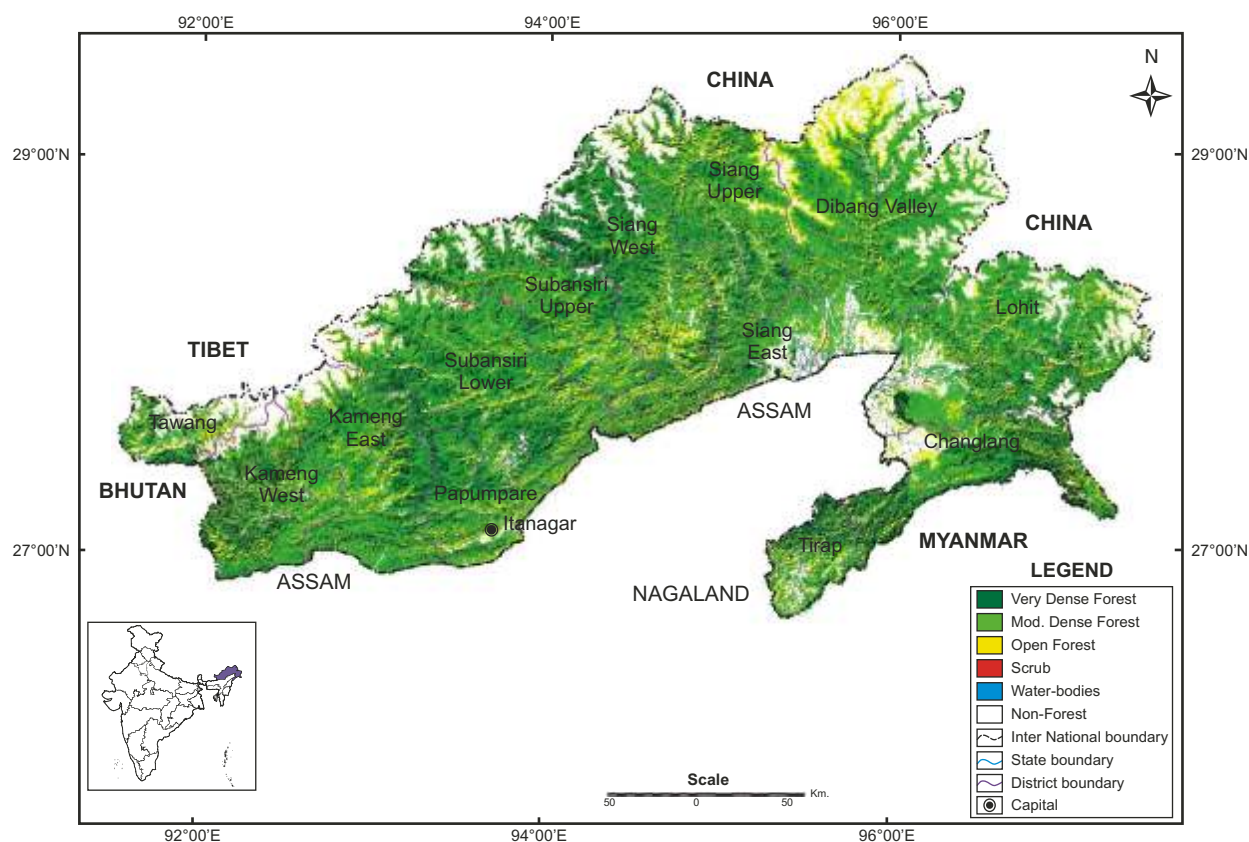


Fig 9.2. Forest Cover Map of Arunachal Pradesh

Table 9.2a: District-wise Forest Cover of Arunachal Pradesh

District-wise Forest Cover								(Area in km ²)
District	Geo-graphical Area	2013 Assessment				Percent of GA	Change	Scrub
		Very Dense Forest	Mod. Dense Forest	Open Forest	Total			
Changlang TH	4,662	1,862	1,449	920	4,231	90.76	-10	2
Dibang Valley TH	13,029	1,696	4,979	2,647	9,322	71.55	1	5
Kameng East TH & Kameng West TH	11,556	3,428	4,668	2,149	10,245	88.66	-14	34
Lohit TH	11,402	1,964	4,024	1,623	7,611	66.75	4	8
Popumpare TH	3,462	991	1,551	703	3,245	93.73	-2	0
Siang East TH	3,655	882	1,264	671	2,817	77.07	-4	0
Siang Upper TH	7,050	1,636	2,621	1,365	5,622	79.74	-5	2
Siang West TH	7,813	2,473	2,717	1,578	6,768	86.62	-16	0
Subansiri Lower TH	9,548	3,004	4,245	1,427	8,676	90.87	3	28
Subansiri Upper TH	7,032	1,876	2,746	1,192	5,814	82.68	-7	25
Tawang TH	2,172	366	486	374	1,226	56.45	0	17
Tirap TH	2,362	650	664	430	1,744	73.84	-39	0
Grand Total	83,743	20,828	31,414	15,079	67,321	80.39	-89	121

Table 9.2b: Change Matrix of Arunachal Pradesh

Forest Cover Change Matrix						(Area in km ²)
2011 Assessment	2013 Assessment					Total 2011
	VDF	MDF	OF	Scrub	NF	
Very Dense Forest	20,828	0	0	0	40	20,868
Moderately Dense Forest	0	31,409	0	0	110	31,519
Open Forest	0	0	14,881	0	142	15,023
Scrub	0	0	0	121	1	122
Non Forest	0	5	198	0	16,008	16,211
Total 2013	20,828	31,414	15,079	121	16,301	83,743
Net Change	-40	-105	56	-1	90	

Table 9.2c: Altitude-wise Forest Cover of Arunachal Pradesh

Altitude -wise Forest Cover					(Area in km ²)
Altitude Zone	VDF	MDF	OF	Total	
0-500	1,592	3,551	2,122	7,265	
500-1000	2,834	4,219	3,267	10,320	
1000-2000	7,766	10,196	4,620	22,582	
2000-3000	6,461	9,090	1,724	17,275	
3000-4000	2,138	4,124	2,908	9,170	
>4000	37	234	438	709	
Total	20,828	31,414	15,079	67,321	

(Based on SRTM, Digital Elevation Model)

Reasons for change detected in 2013 assessment:

The decrease in forest cover of the state is due to shifting cultivation practices and biotic

pressure in many of the districts. However in some areas regeneration of bamboos and other miscellaneous species and plantation by SFD is also observed.